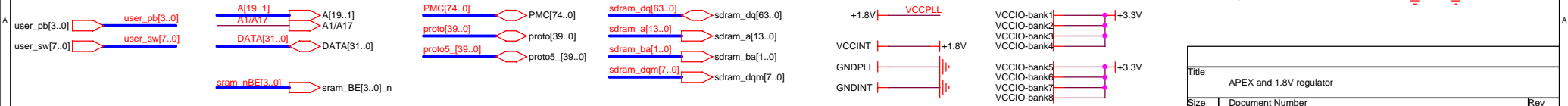
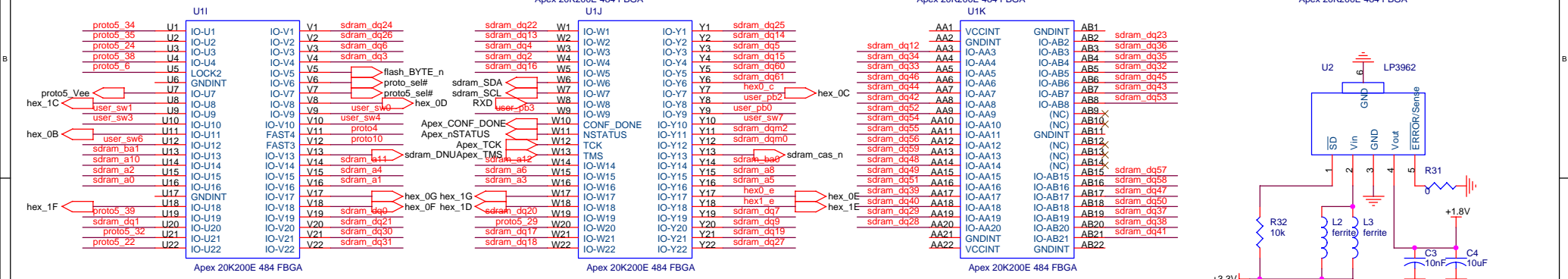
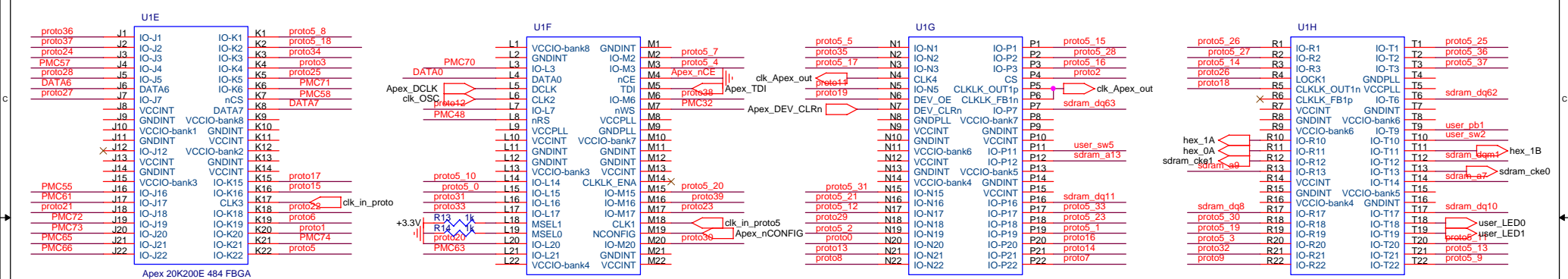
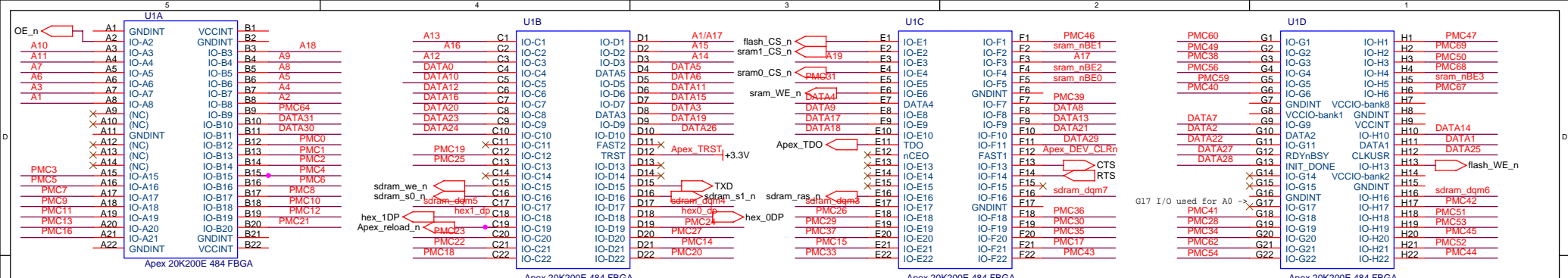
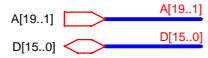
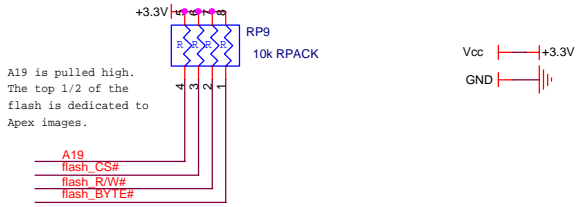


Title		
Nios Development Board- top		
Size	Document Number	Rev
B	Nios Development Board	pilot
Date:	Tuesday, June 27, 2000	Sheet 1 of 11

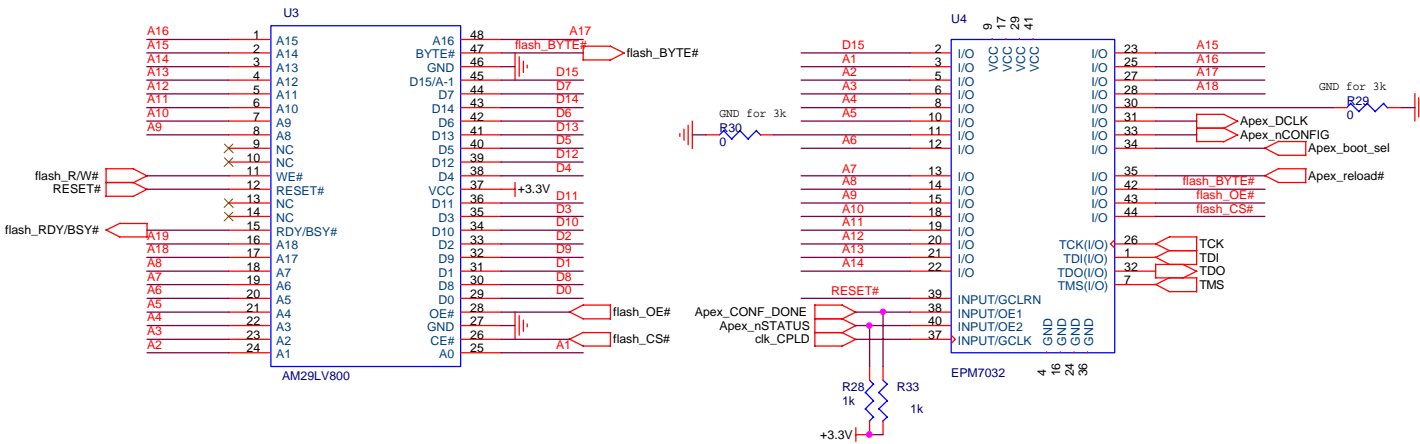
Apex_boot_sel determines whether to force a boot from the default boot sector, or the user-programmed boot sector.



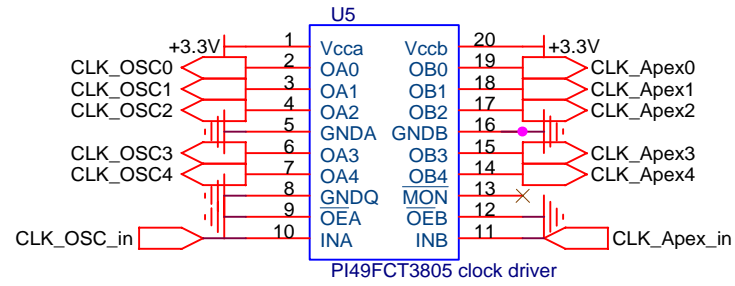
Title		
APEX and 1.8V regulator		
Size	Document Number	Rev
B	Nios Development Board	pilot
Date:	Tuesday, June 27, 2000	Sheet 2 of 11



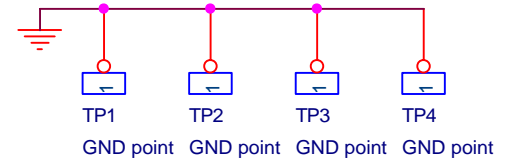
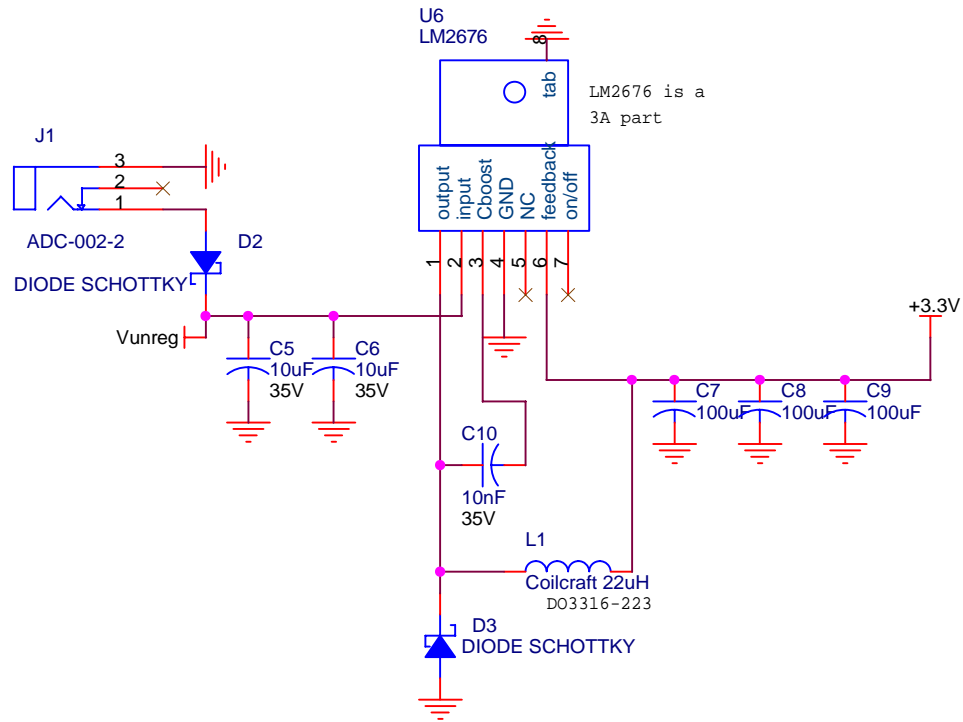
D15/A-1 pin is described as D15.
Note that it is a virtual "A0" when the CPLD loads the Apex (BYTE mode),
but becomes "D15" when the CPU is running in the Apex (WORD mode).



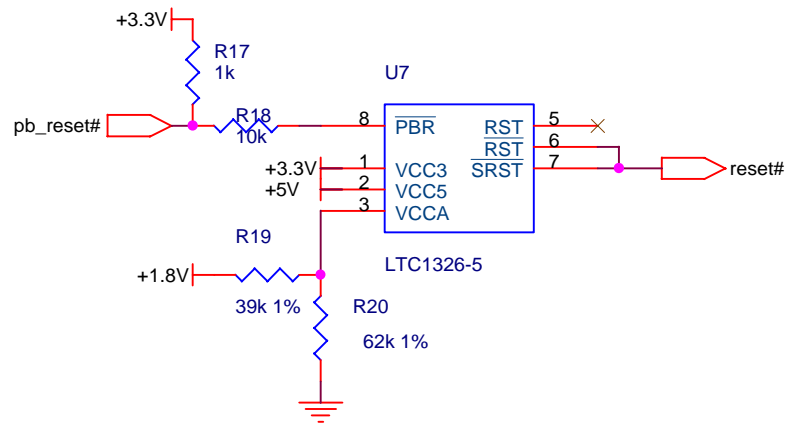
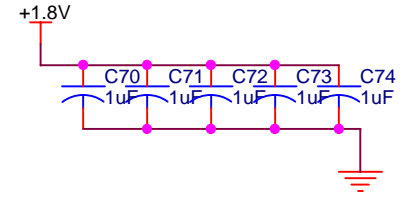
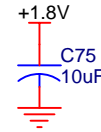
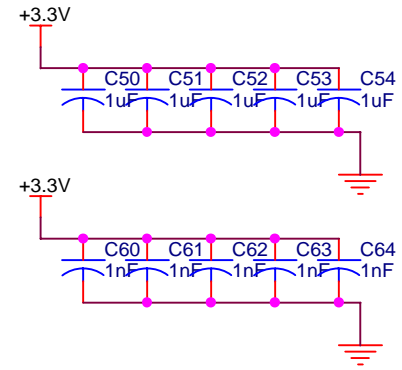
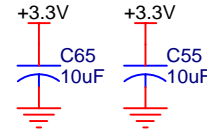
Title flash and Configuration Controller		
Size B	Document Number Nios Development Board	Rev pilot
Date: Tuesday, June 13, 2000	Sheet 3	of 11



Title		
Clock Distribution PLL		
Size	Document Number	Rev
A	Nios Development Board	pilot
Date:	Tuesday, June 13, 2000	Sheet 4 of 11

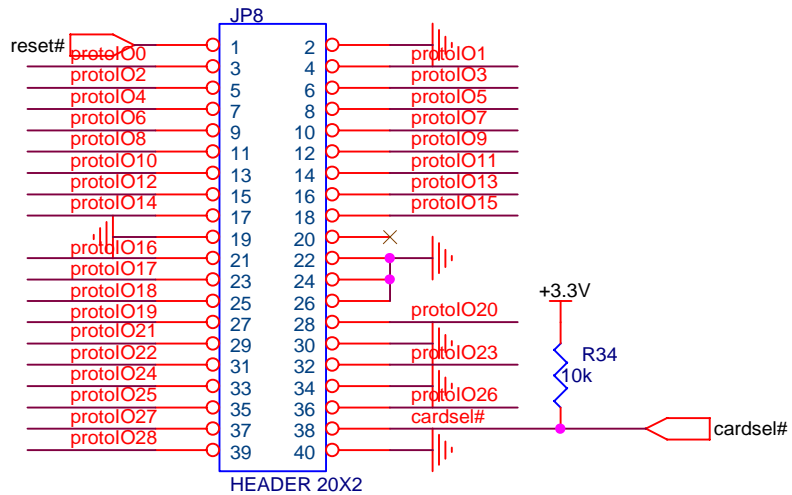
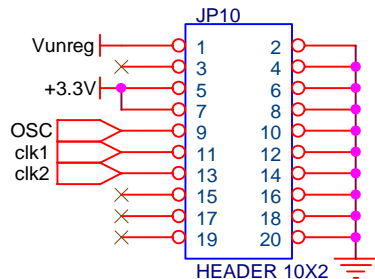
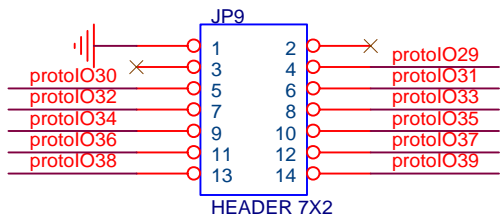


bypass caps:



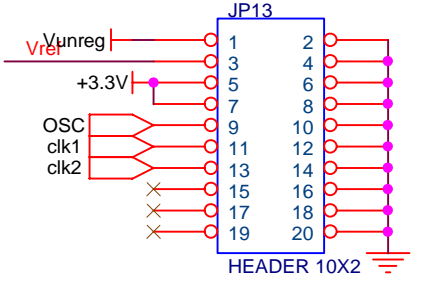
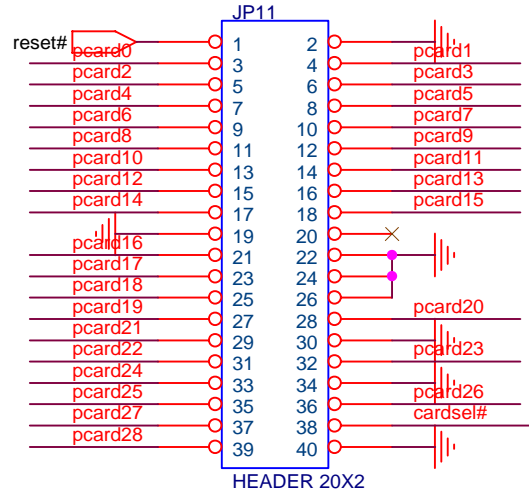
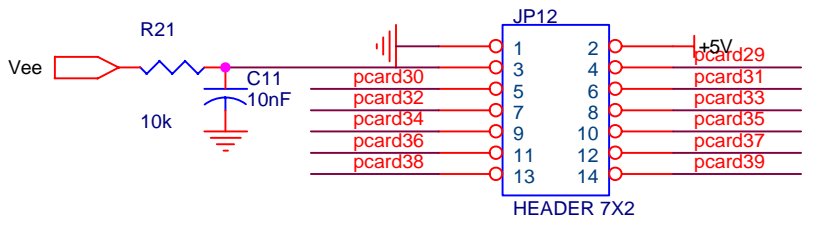
Title		
Power		
Size	Document Number	Rev
A	Nios Development Board	pilot
Date:	Tuesday, June 27, 2000	Sheet 6 of 11

protoIO[39..0]  protoIO[39..0]

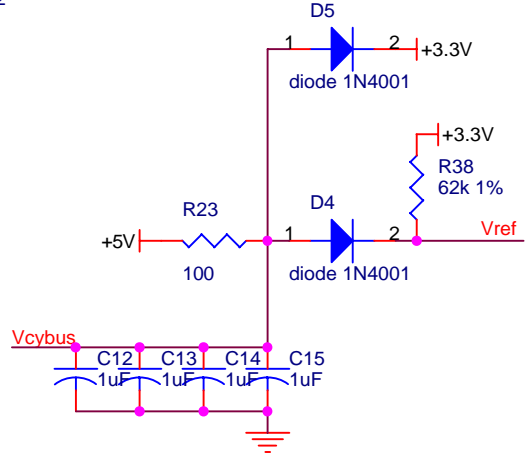
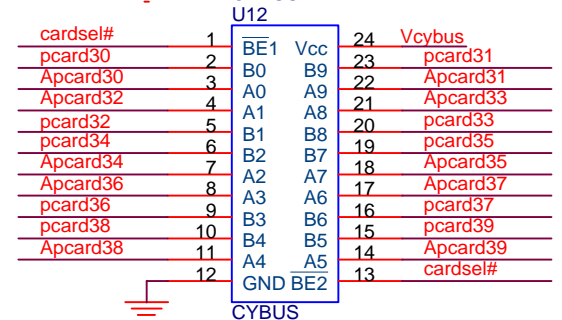
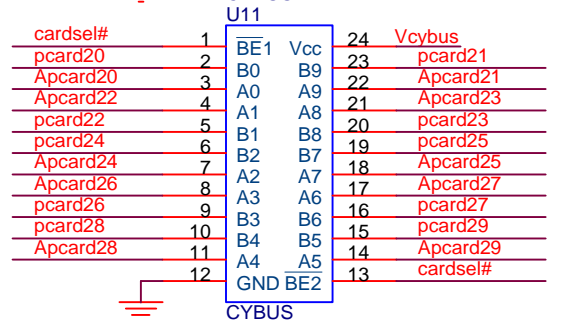
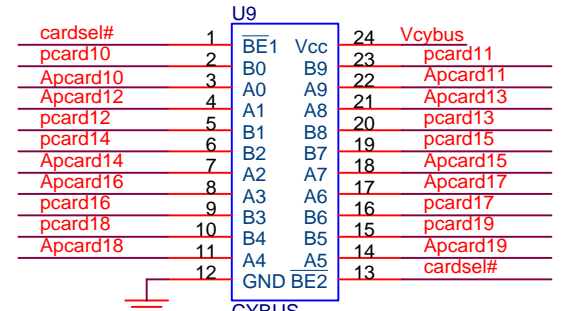
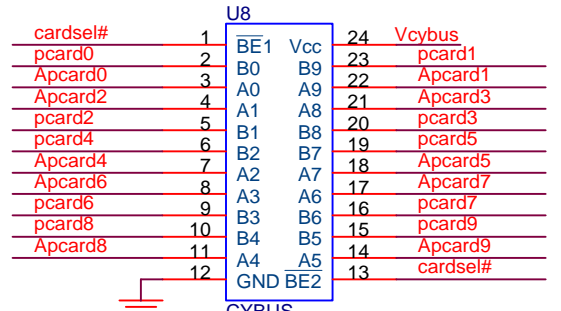


Title		
3.3V Prototype Card		
Size	Document Number	Rev
A	Nios Development Board	pilot
Date:	Tuesday, June 13, 2000	Sheet 7 of 11

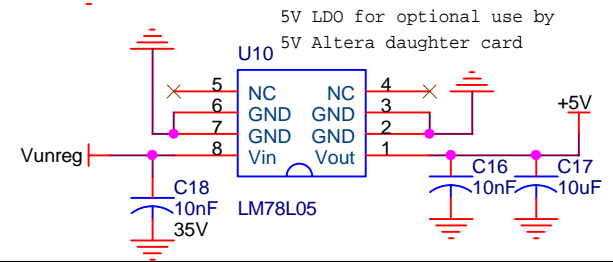
Apcard[39..0]  Apcard[39..0]



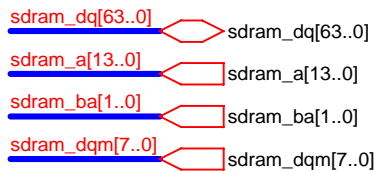
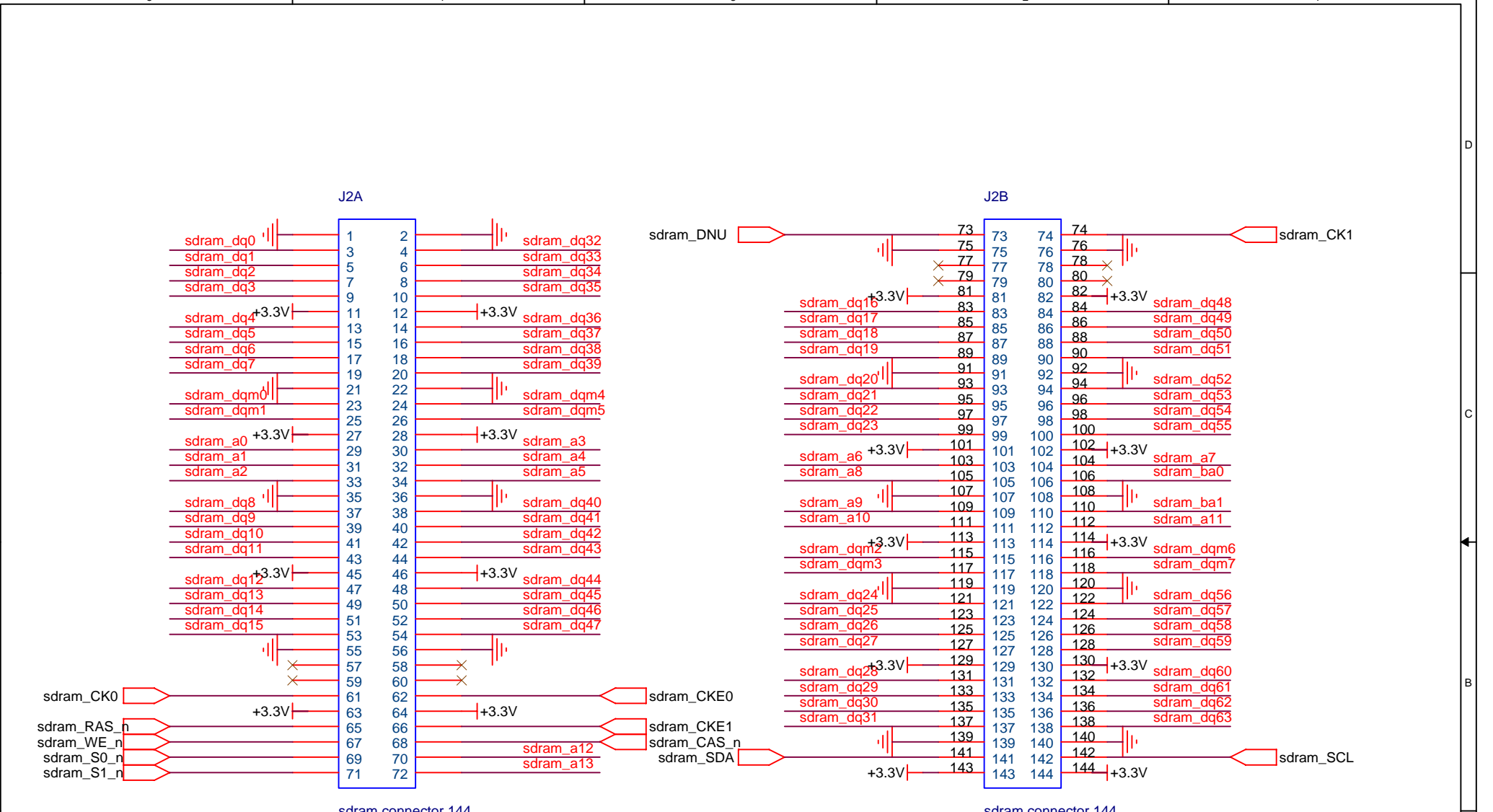
U8, U9, U11, U12 are voltage-limiting switches.
nets pcard* represent the connector side of the switch
nets Apcard* represent the APEX side of the switch



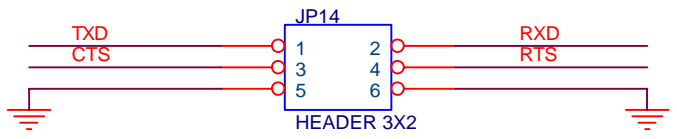
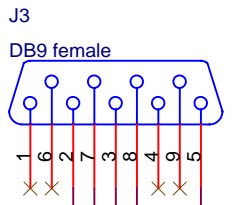
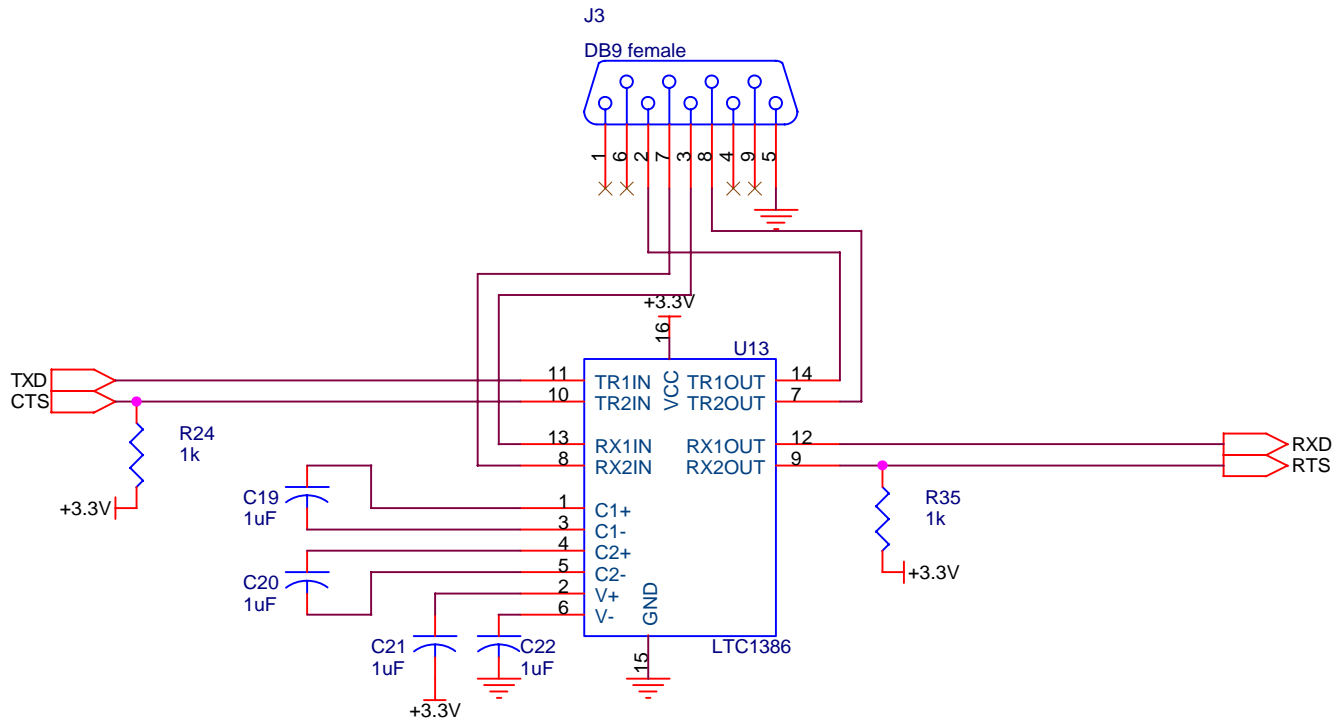
really any large-value pull-up will do. I'm just using largest value of R already on the board.



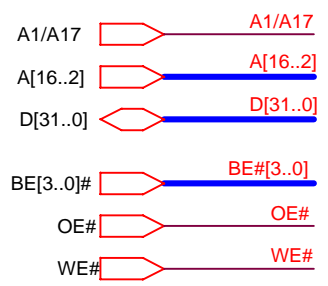
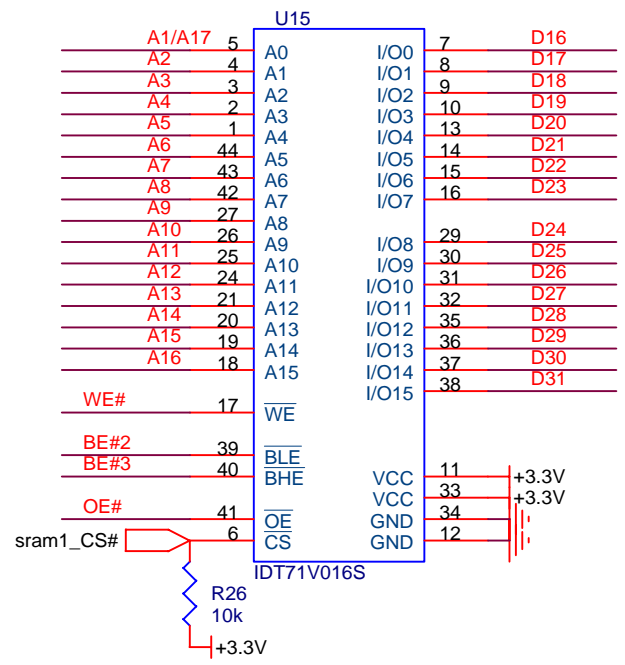
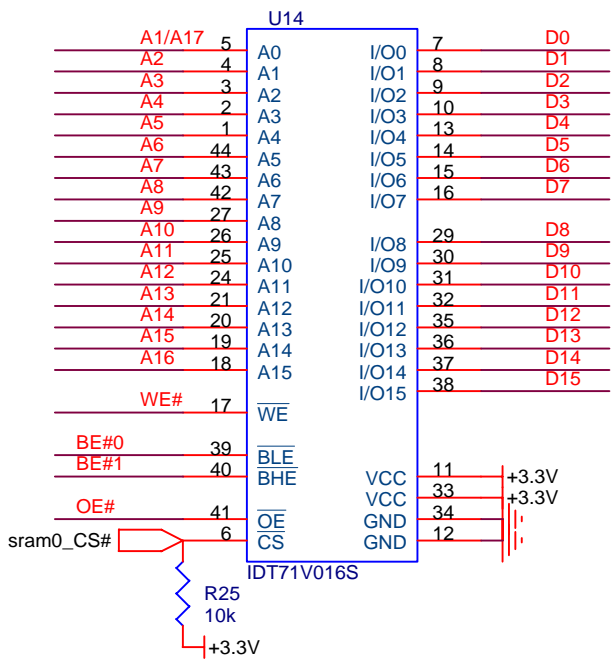
Title		
5V Prototype Card		
Size	Document Number	Rev
A	Nios Development Board	pilot
Date:	Tuesday, June 27, 2000	Sheet 8 of 11



Title		
SODIMM SDRAM connector		
Size	Document Number	Rev
A	Nios Development Board	pilot
Date:	Tuesday, June 13, 2000	Sheet 9 of 11



Title		
Serial Port		
Size	Document Number	Rev
A	Nios Development Board	pilot
Date:	Tuesday, June 13, 2000	Sheet 10 of 11



Title		
SRAM		
Size	Document Number	Rev
A	Nios Development Board	pilot
Date:	Tuesday, June 13, 2000	Sheet 11 of 11